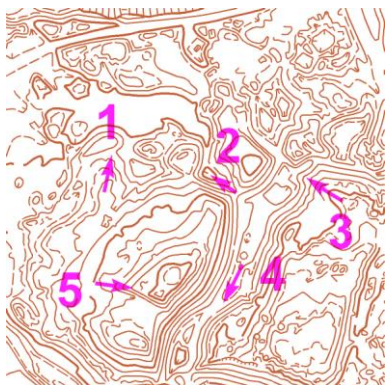
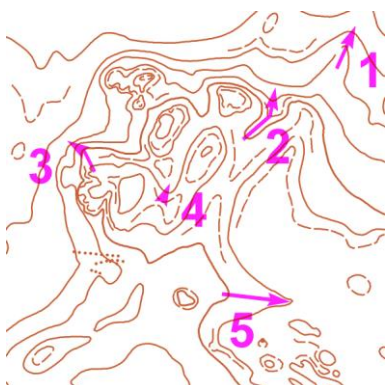


### Práce s vrstevnicemi

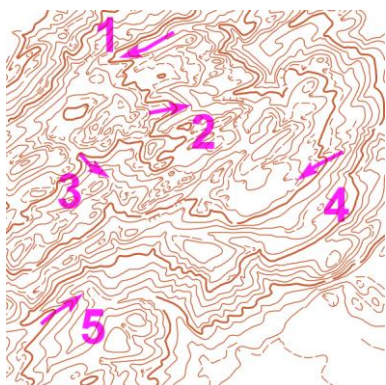
V tabulce vyplň, zda šipka označuje hřbet (H) nebo údolí (U); označ šipkami ↑, ↓ - stoupání nebo klesání:



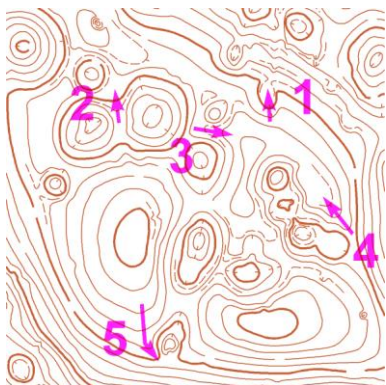
	1	2	3	4	5
H/U					
↑/↓					



	1	2	3	4	5
H/U					
↑/↓					



	1	2	3	4	5
H/U					
↑/↓					



	1	2	3	4	5
H/U					
↑/↓					