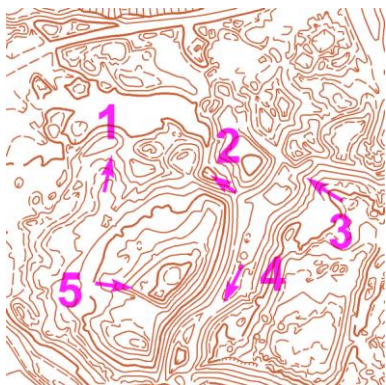
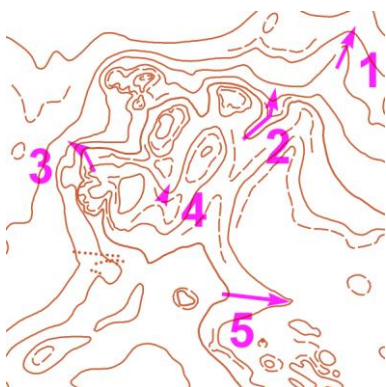


Práce s vrstevnicemi - řešení

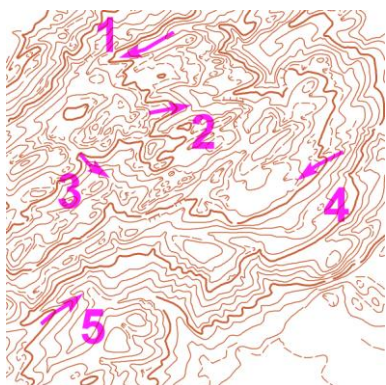
V tabulce vyplň, zda šipka označuje hřbet (H) nebo údolí (U); označ šipkami \uparrow, \downarrow - stoupání nebo klesání:



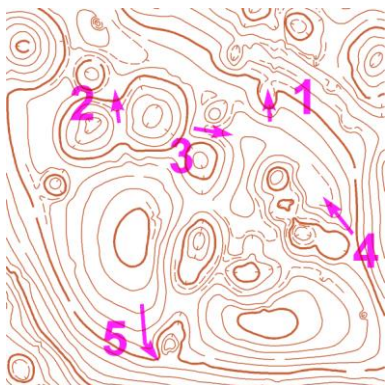
	1	2	3	4	5
H/U	H	U	H	U	H
\uparrow/\downarrow	\downarrow	\downarrow	\downarrow	\uparrow	\uparrow



	1	2	3	4	5
H/U	H	U	H	U	U
\uparrow/\downarrow	\downarrow	\downarrow	\downarrow	\downarrow	\uparrow



	1	2	3	4	5
H/U	U	H	U	H	H
\uparrow/\downarrow	\uparrow	\downarrow	\downarrow	\uparrow	\downarrow



	1	2	3	4	5
H/U	U	H	H	H	H
\uparrow/\downarrow	\downarrow	\uparrow	\uparrow	\uparrow	\downarrow