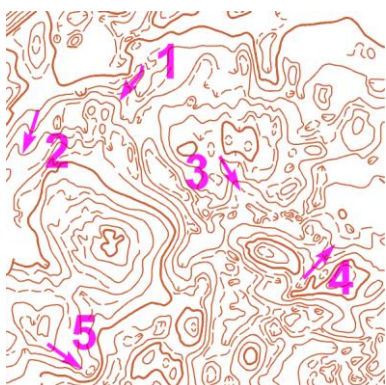


Vrstevnice – šípky 1 - řešení

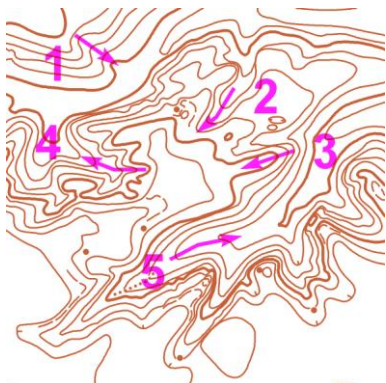
V tabulce vyplň, zda šípka označuje hřbet (H) nebo údolí (U); označ šípkami \uparrow, \downarrow - stoupání nebo klesání:



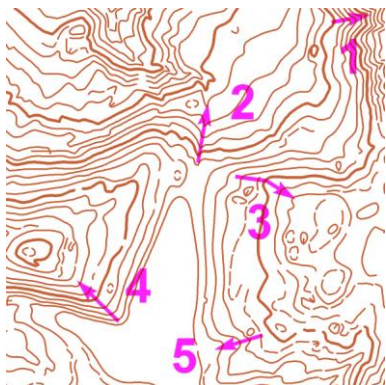
	1	2	3	4	5
H / U	U	U	U	U	H
\uparrow / \downarrow	\downarrow	\downarrow	\downarrow	\uparrow	\downarrow



	1	2	3	4	5
H / U	H	U	U	U	H
\uparrow / \downarrow	\uparrow	\uparrow	\downarrow	\downarrow	\downarrow



	1	2	3	4	5
H / U	U	U	H	U	U
\uparrow / \downarrow	\downarrow	\uparrow	\uparrow	\downarrow	\downarrow



	1	2	3	4	5
H / U	U	U	H	H	U
\uparrow / \downarrow	\uparrow	\downarrow	\uparrow	\uparrow	\downarrow