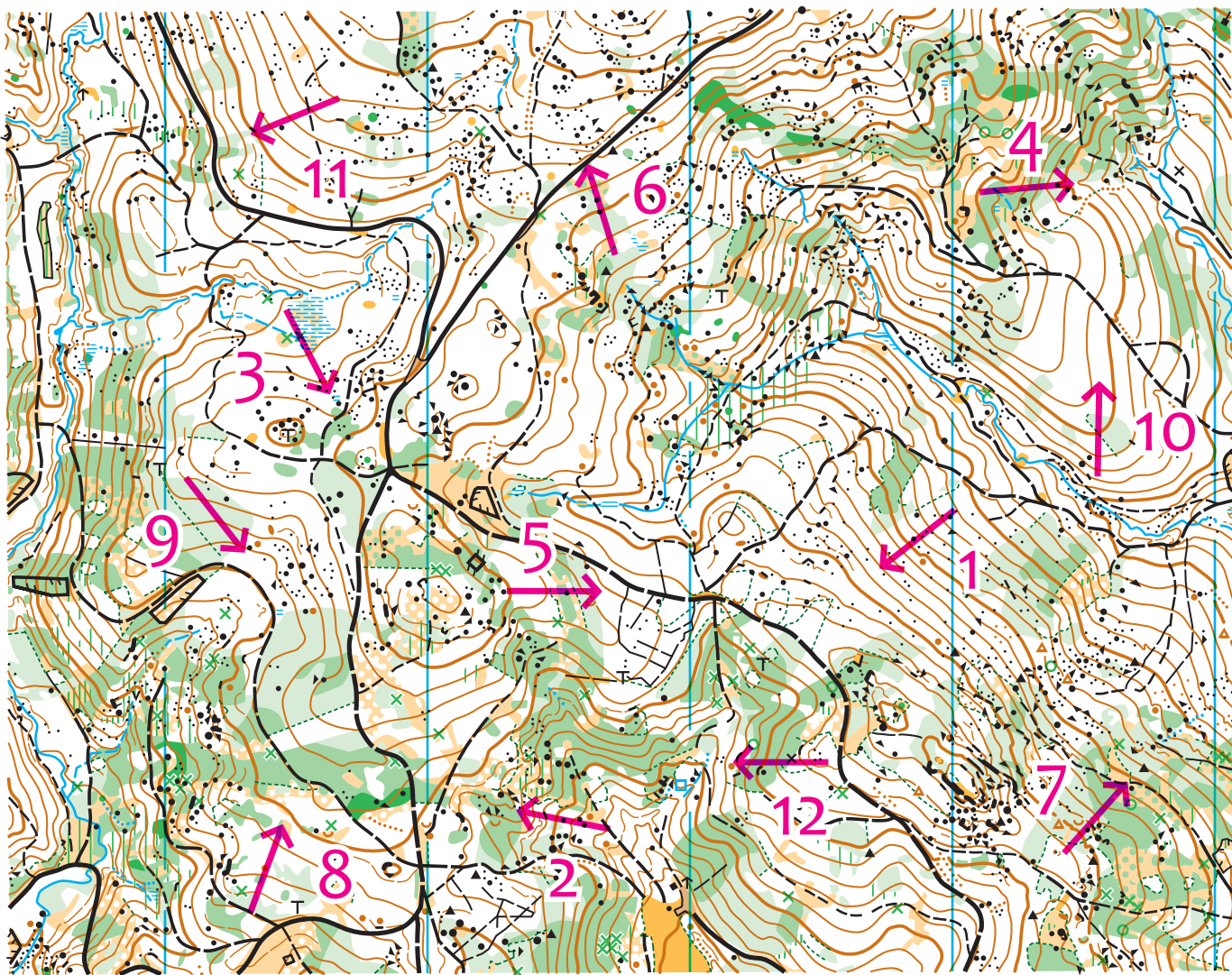


# NAHORU-DOLU

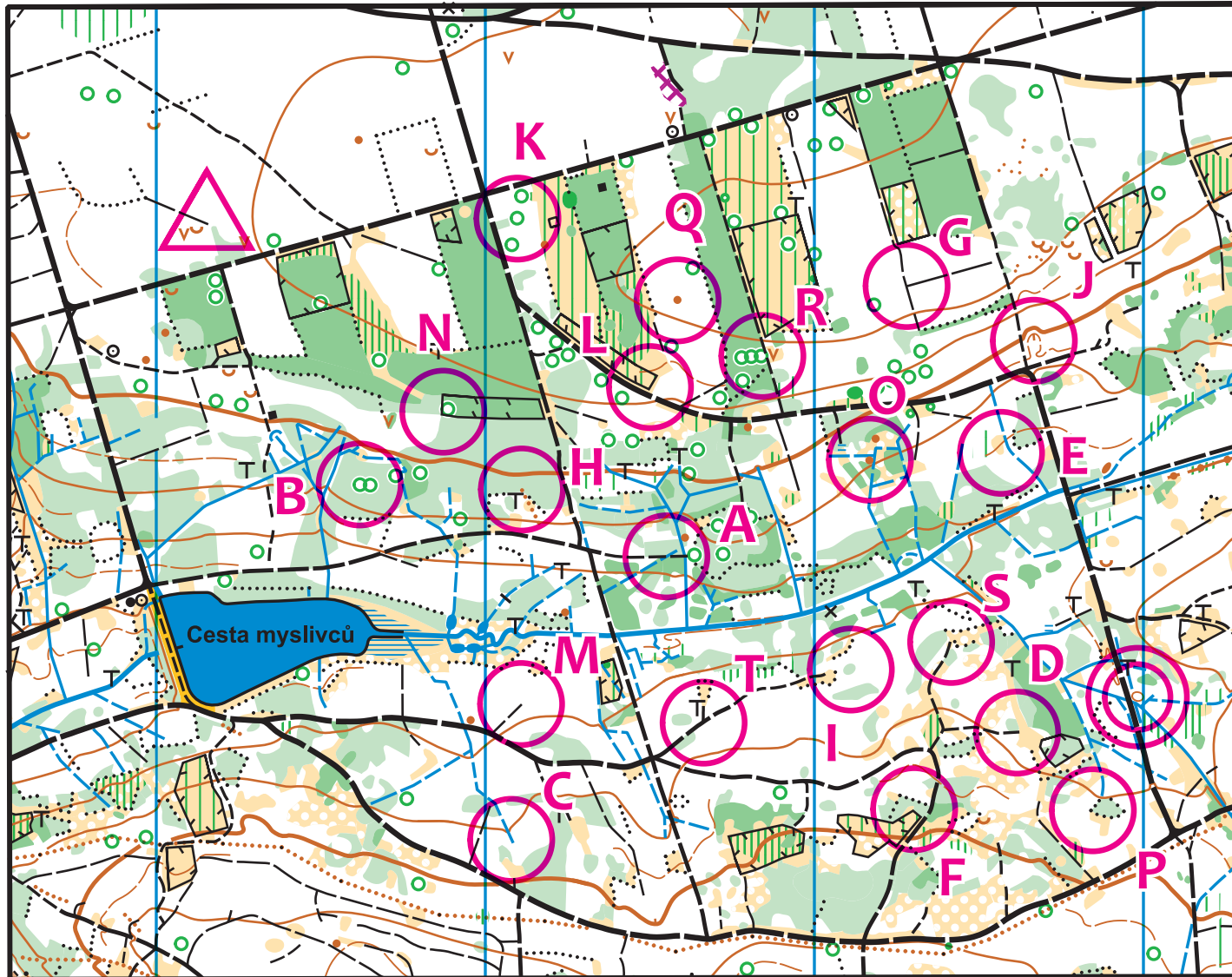
*Rozhodni, zda šipka ukazuje do kopce nebo z kopce*



1		2		3		4	
5		6		7		8	
9		10		11		12	

# Postav trat'

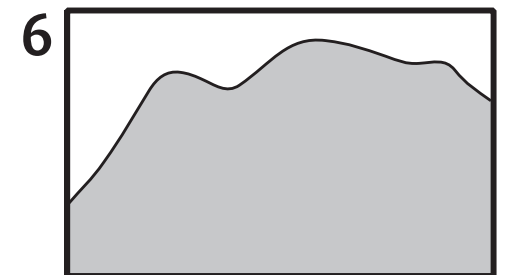
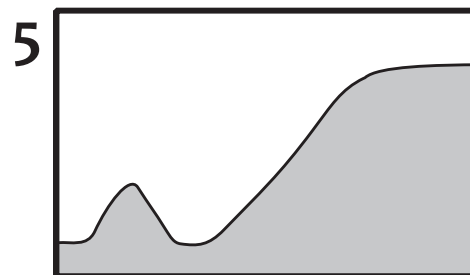
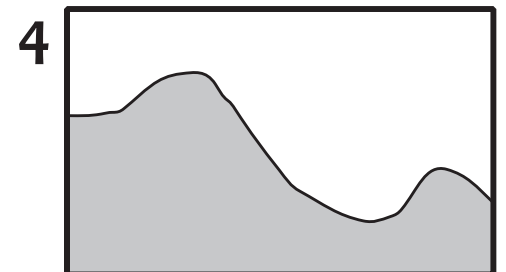
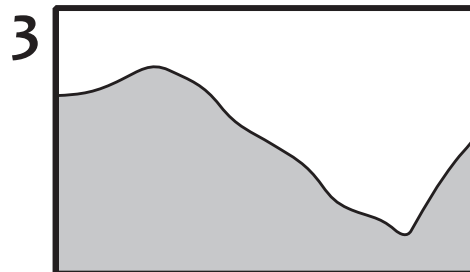
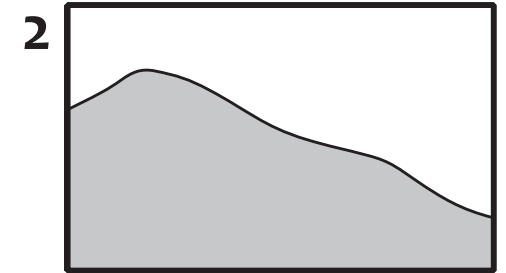
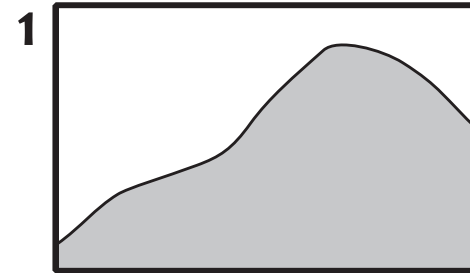
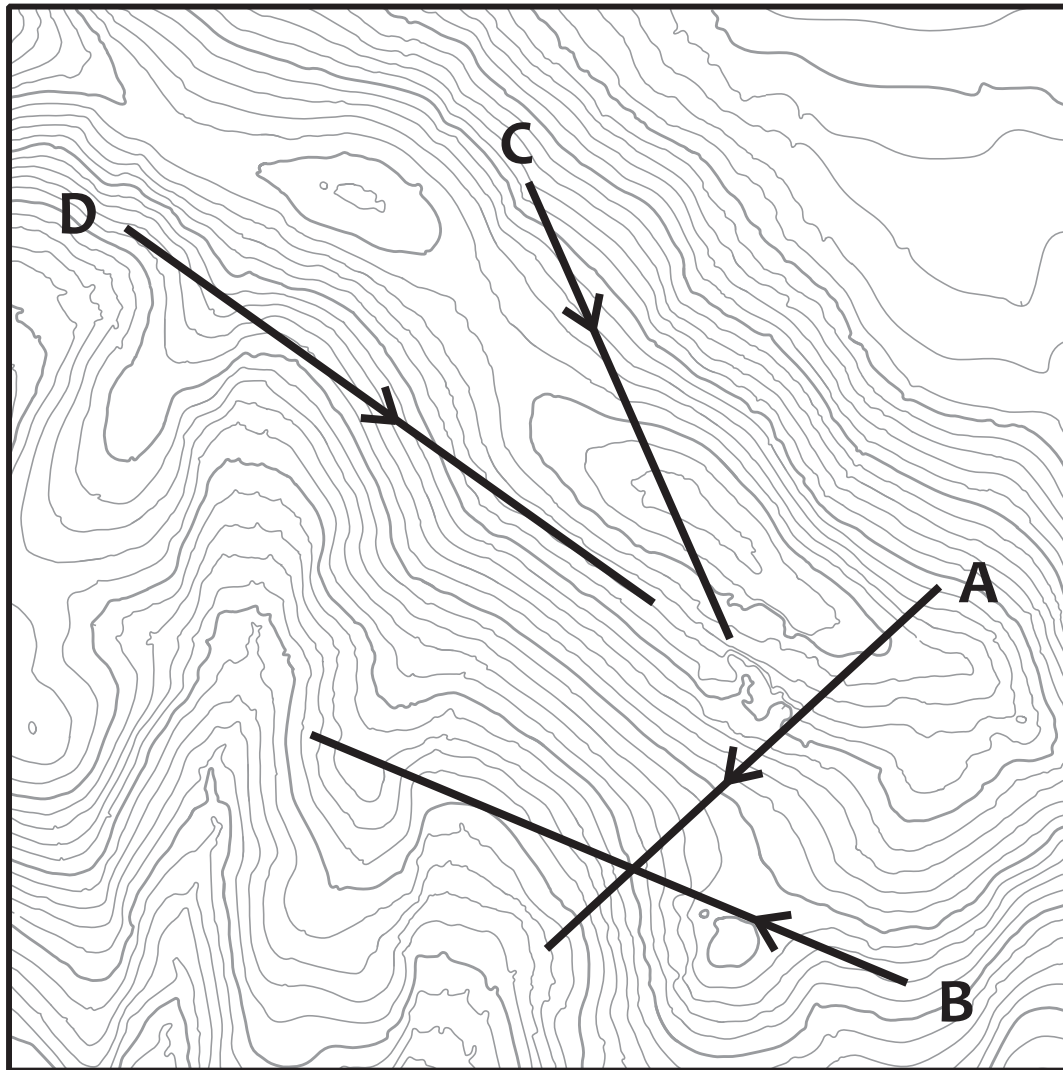
Na základě popisů kontrol spoj správně kontroly a postav trat'



Trat'	2,0 km	30 m
▷		↘
1	▲ ♣	○
2	///	↖
3	--- 552 X	
4	→ ▲ ♣	
5	... .. Y	
6	⊙	♀
7	↓ ●	⊙
8	/// --- Y	
9	///	^
10	///	—
○ <	110 m	> ⊙

# PROFILY

*Přiřad' daný postup k profilu*

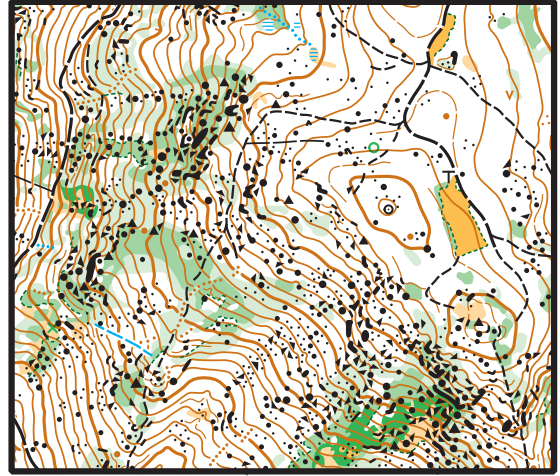
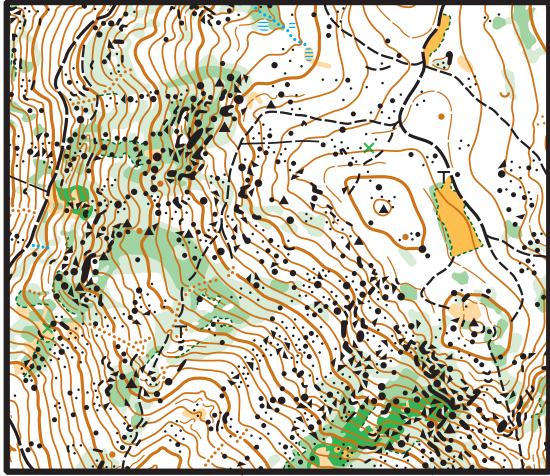




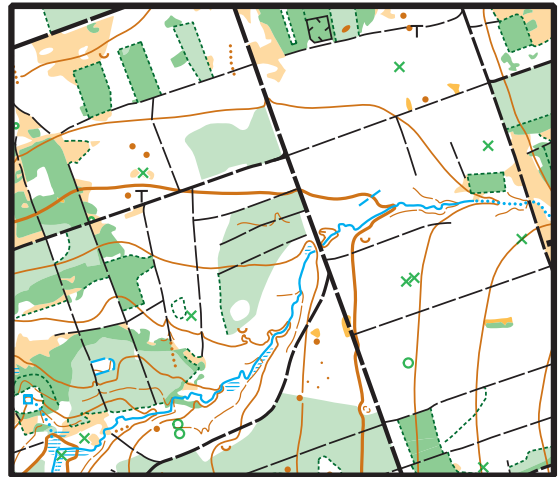
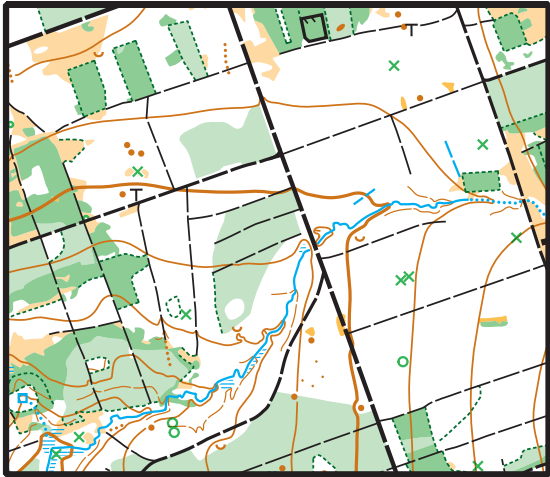
# ROZDÍLY

*Najdi vždy právě 10 rozdílů mezi každou dvojicí map*

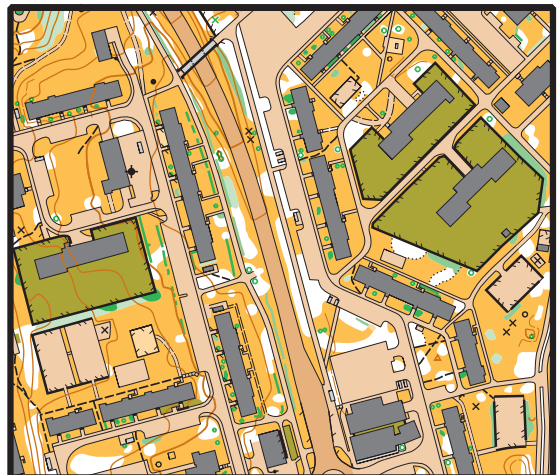
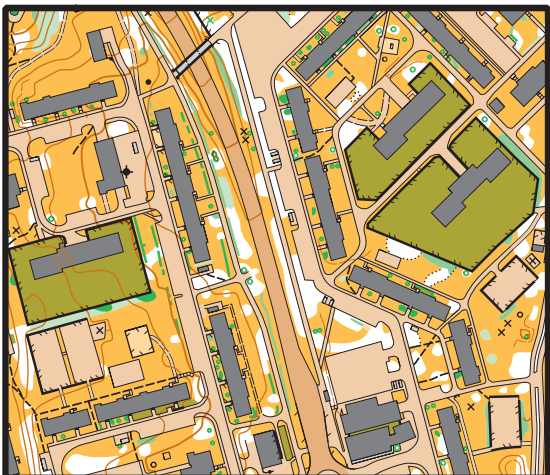
1



2

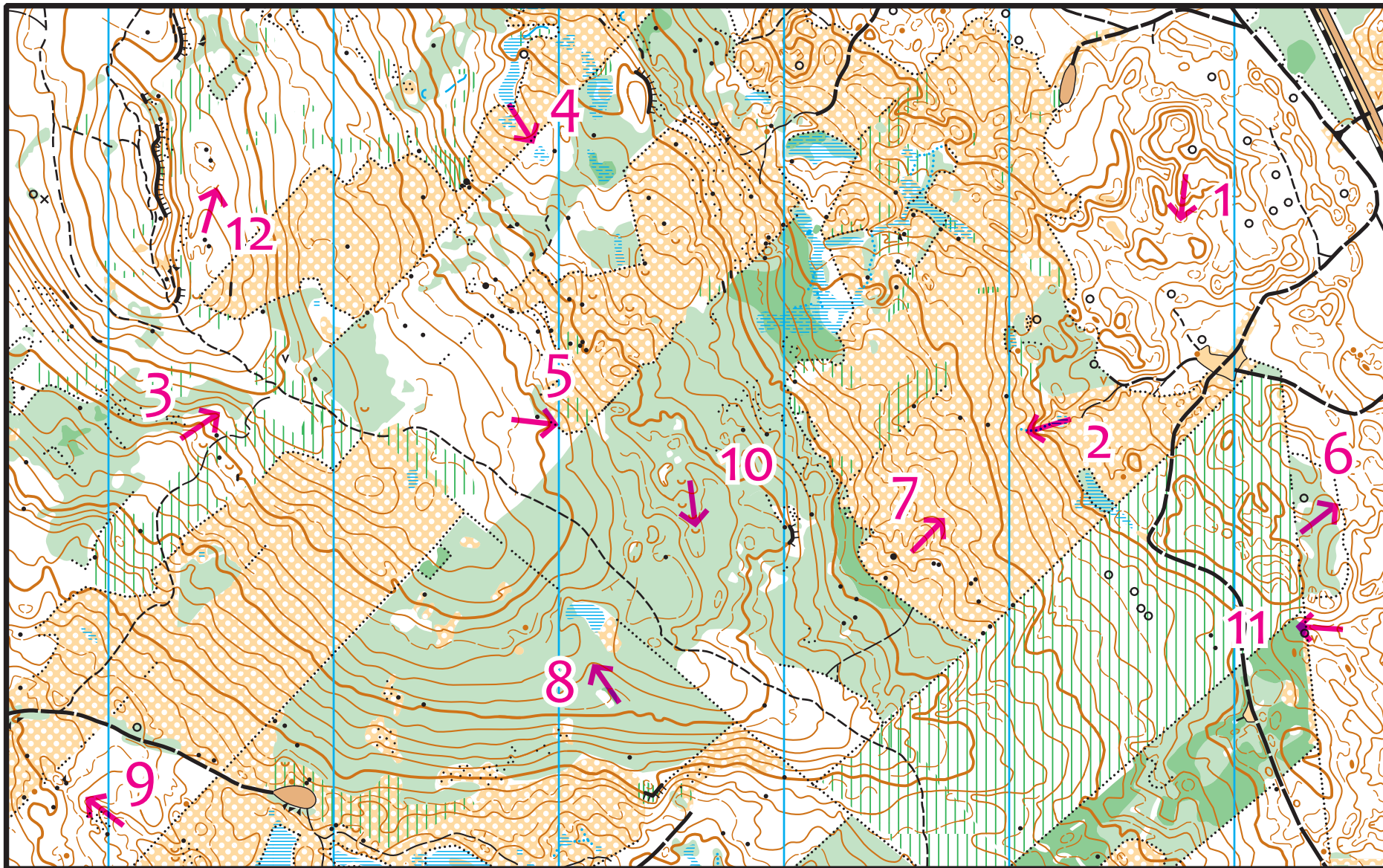


3



# HŘBET NEBO ÚDOLÍ?

Rozhodni, zda šipka vede po hřebítku nebo údolíčkem



1	2
3	4
5	6
7	8
9	10
11	12